



SMART RETAIL SOLUTIONS



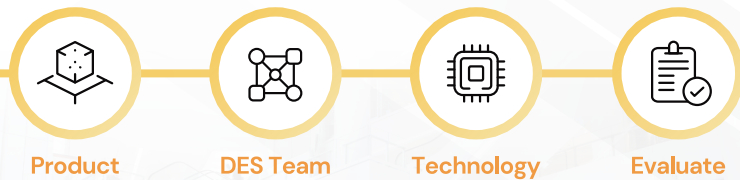
www.axiomtek.com

Smart Retail Solutions

Creating a Smooth Shopping Experience for Users

As digital transformation shapes the retail industry, Axiomtek offers cutting-edge and easily deployable retail solutions, supporting businesses in creating seamless online engagement and dynamic in-store experiences. Our products are designed for cutting-edge applications such as in-store signage and interactive kiosks, helping retailers reduce costs, improve sales, and enhance customer engagement.

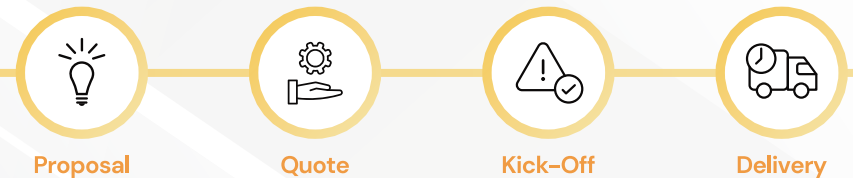
Axiomtek's Design-In Business Chart



- Facilitate Project Timelines with Modular Design
- Modifications Based on Standard Products
- Support from Local DES Team

Our Advantages

- 1 Advanced, feature-rich, and easy-to-deploy retail computer products
- 2 Value-Added Design-in Service for enhanced customers' satisfaction
- 3 Flexible, modular design, and rapid customization
- 4 High quality, reliable products
- 5 System integration capability
- 6 Over ten-year rich experience and know-how in the retail industry



Digital Signage Player Series

DSP302



Fanless Palm-sized Digital Signage Player

- Intel® Celeron® processor N6210/J6413
- 4GB LPDDR4 memory onboard (8GB optional)
- 3 HDMI 2.0 in support of 4K resolution
- 4 USB and 1GbE LAN
- Full-size PCIe Mini Card slot for Wi-Fi/Bluetooth/3G/4G
- M.2 Key M 2242 slot for SATA/PCIe

DSP310 NEW



Palm-sized Digital Signage Player

- Intel® processor N100
- 8GB LPDDR5 memory onboard
- 1 HDMI 2.0 and 1 DisplayPort 1.3
- 2 GbE LAN
- Fan cooling

DSP501-527



Fanless 4K Digital Signage Player

- Intel® Core™ i5/i3 or Celeron® processor
- 2 DDR4-2400 SO-DIMM for up to 32GB of memory
- HDMI 2.0 and DisplayPort++ in support of 4K resolution
- 5 USB and GbE LAN
- Supports a wide temperature range
- Supports Hailo-8 AI accelerator

DSP511



Fanless 4K Digital Signage Player

- 11th Gen Intel® Core™ i5/i3 or Celeron® processor
- 2 DDR4-3200 SO-DIMM for up to 64GB of memory
- 4 HDMI 2.0 in support of 4K resolution
- 4 USB, one 2.5G LAN, and 1GbE LAN
- M.2 Key E 2230 slot for Wi-Fi/Bluetooth
- M.2 Key B 3052 slot for 5G/LTE
- M.2 Key M 2280 slot for storage
- Compliant with CE+FCC+BSMI specifications

DSP521 NEW



Fanless 4K Digital Signage Player

- Intel® Core™ i5/i3 processor
- 2 DDR4 SO-DIMM 3200 for up to 32G of memory
- 2 HDMI 2.0 and 2 DisplayPort++ in support of 4K resolution
- 1GbE LAN and 2.5G LAN
- 2 RS-232

DSP600



AMD-Based 4K Digital Signage Player

- AMD Ryzen™ Embedded V1000 series
- 2 DDR4-2400 SO-DIMM for up to 32GB of memory
- 4 HDMI 2.0 in support of 4K resolution
- 4 USB and 2 GbE LAN
- M.2 Key E 2230 slot for Wi-Fi/Bluetooth
- 2 M.2 Key M 2280 slots for storage



Intel® Smart Display Module (Intel® SDM) Series

SDM300S



Intel® Smart Display Module Small (Intel® SDM-S)

- Intel® Pentium® processor N4200 or Celeron® processor N3350
- 4GB LPDDR4 memory onboard (8GB optional)
- 64GB eMMC onboard (32GB optional)
- 2 USB and 1GbE LAN
- M.2 Key E 2230 slot for Wi-Fi/Bluetooth
- Small form factor design

SDM500L



Intel® Smart Display Module Large (Intel® SDM-L)

- 8th Gen Intel® Core™ i7/i5/i3 or Intel® Celeron® processor
- 2 DDR4-2400 SO-DIMM for up to 32G of memory
- 1 HDMI, 4 USB, and 1GbE LAN
- M.2 Key E 2230 slot for Wi-Fi/Bluetooth
- M.2 Key M 2280 slot for storage
- M.2 Key B 2242 slot for expansion
- Supports Intel® AMT 12

SDM310S NEW



Intel® Smart Display Module Small (Intel® SDM-S)

- Intel® Celeron® processor J6412
- 4GB LPDDR4 memory onboard (8GB optional)
- 64GB eMMC onboard (128GB optional)
- Supports two 4K displays
- 2 Type C (USB 3.2) and 1GbE LAN
- Small form factor design

SDM510L



Intel® Smart Display Module Large (Intel® SDM-L)

- 12th Gen Intel® Core™ i7/i5/i3 or Intel® Celeron® processor
- 2 DDR4-3200 SO-DIMM
- 3 HDMI, 4 USB, and 1GbE LAN
- M.2 Key E 2230 slot for Wi-Fi/Bluetooth
- M.2 Key M 2242 slot for storage
- Supports Intel® OpenVINO™ and Intel vPro®

People Flow Analysis System



Self Check-in/out Kiosk

Information Terminal

Interactive Multimedia Broadcast System

Interactive Touch Computer Series



RFID reader

Camera

Barcode scanner

Thermal printer

- Swappable SDM CPU card for easy upgrade and maintenance
- Aluminum bezel with an aspect ratio of 16:9
- 10-point PCAP touchscreen and wide viewing angle
- Add-on modules: camera, RFID reader, barcode scanner, printer, LED lightbar, and keypad
- Supports countertop, wall-mount, and floor stand

ITC151

15.6" HD LCD Slim Bezel Modular Panel PC

- 220 nits brightness
- Slim bezel under a 33.5 mm thickness

ITC211

21.5" FHD LCD Slim Bezel Modular Panel PC

- 250 nits brightness
- Slim bezel under a 46.3 mm thickness

ITC241

23.8" FHD LCD Slim Bezel Modular Panel PC

- 250 nits brightness
- Slim bezel under a 47.5 mm thickness

Self-Service Kiosk Series

SSK315 (REGATA)

15.6" Full HD Kiosk



- Optical bonding LCD with a wide viewing angle
- 400 nits brightness
- Supports floor stand and countertop
- Dual-illuminating status with a 256-color LED lightbar
- Peripheral module design: RFID scanner, barcode reader, thermal printer, and passport scanner

SSK515 (CUBE)

15.6" Full HD Kiosk



- LCD with a wide viewing angle
- Super-slim design with 8.7 cm in thickness
- Swappable SDM CPU card for easy upgrade and maintenance
- Features a 256-color LED lightbar
- Peripheral module design: RFID scanner, barcode reader, thermal printer, and EFT holder

SSK721

21.5" Full HD Cash Kiosk



- Features a Full HD 10-point PCAP touchscreen and a wide viewing angle
- Cash payment: bill acceptor, note dispenser, and coin acceptor
- Cashless payment: barcode scanner, RFID reader, EFT holder, and thermal printer
- Supports floor stand and countertop
- Customization of ID, cash module, and cashless module

SSK722

21.5" Customization Kiosk



- Dual Full HD 10-point PCAP touchscreens and a wide viewing angle
- Cash payment: bill recycler
- Cashless payment: barcode scanner, RFID reader, EFT holder, and thermal printer
- Supports floor stand and countertop
- Customization of ID, screen, cash module, and cashless module design

People Flow Analysis System

Self-service Payment Kiosk

Digital Menu Board

Multi-purpose Promotional Display

Design-In Service

Enhance your smart retail business with Axiomtek's Design-In Service

Our Design-In Service offers customized systems and boards tailored to specific application needs. We utilize advanced and innovative technologies, providing diverse customization options, manufacturing flexibility, and global technical and logistical support.

Axiomtek's business models for channel partner business activities

Channel Managed Design-In Business

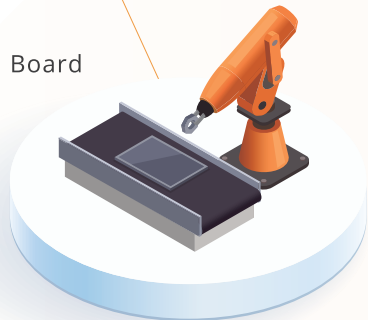
We focus on providing products and services, offering regular technical training, and maintaining an applications engineering team ready to assist customers.

Collaborating with Axiomtek to Approach Customers

We will take the lead in clarifying specifications and recommending the optimal product, handling all technical inquiries.

1 Design

- Customization Based on Standard Products
- Baseboard & Application Board



2 Row Material

- Common Parts Readiness
- Emphasizing New Parts for Revision



Design-in Service Express Process

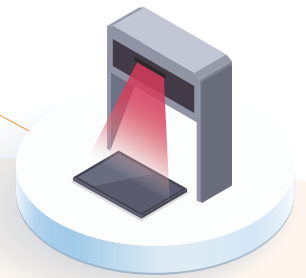
3 Sample Delivery

- Efficient PCB Production & Fast-tracking PCBA Process
- Use Popular Models



4 Validation

- Validate the Key Difference
- ESD Pre-scan Service from Boards to Systems



5 Mass Production

- Time to Market
- Tailored ODM Process
- Globalization Service





ASIA

Axiomtek Co., Ltd (HQ)

8F., No.55, Nanxing Road, Xizhi District,
New Taipei City 221, Taiwan

T/ +886-2-8646-2111

F/ +886-2-8646-2555

E/ info@axiomtek.com.tw

Axiomtek Technology (Shenzhen) Co., Ltd.

Unit GH, 6F, Building 7 (Block B),
Baoneng Science and Technology Park,
Longhua Street, Qinghu Community,
Qinghu Village, Longhua District,
Shenzhen China

T/ +86-0755-66865899

F/ +86-0755-66863068

E/ axcn@axiomtek.com.cn

Axiomtek Japan Co., Ltd.

3F, 1-7-11, Higashi Nihonbashi,
Chuo-Ku, Tokyo 103-0004,
Japan

T/ +81-(0)3-6206-0308

E/ info@axiomtek.co.jp

Axiomtek (Malaysia) Sdn. Bhd.

No 16, Jalan Tandang 51/205A,
Seksyen 51, 46050 Petaling Jaya,
Selangor, Malaysia

T/ +603-77731203

T/ +603-77724403

E/ info@axiomtek.com.my

Axiomtek (Thailand) Co., Ltd.

7/17 Moo 6, Tumbol Banmai,
Amphur Pakkret, Nonthaburi,
Thailand 11120

T/ +662-573-4725

F/ +662-573-4726

E/ sales@axiomtek.co.th

USA

Axiomtek (U.S. HQ)

18138 Rowland Street, City of
Industry, CA 91748, USA

T/ +1-626-581-3232

F/ +1-626-581-3552

E/ info@axiomtek.com
sales@axiomtek.com

Regional Sales Office

Western Region ext. 116
Northeast/Southeast Region ext. 123
North Central Region ext. 189

T/ +1-626-581-3232

Axiomtek Systems

300 Griffin Brook Drive,
Methuen, MA 01844, USA

T/ +1-978-258-0108

EU

Axiomtek Deutschland GmbH

Elisabeth-Selbert Strasse 21a
40764 Langenfeld, Germany

T/ +49-2173-399360

E/ welcome@axiomtek.de

Axiomtek UK Limited

Peter House, Oxford Street,
Greater Manchester, M1 5AN

T/ +44(0)1612093680

E/ info@axiomtek.co.uk

Axiomtek ITALIA S.r.l.

Via Pavia, 21, 20835 Muggiò (MB),
Italy

T/ +39-02-664299.1 r.a.

E/ info@axiomtek.it



V458 94300005440E